



CD138 Polyclonal Antibody

Catalog No	YP-Ab-14065
Isotype	IgG
Reactivity	Human;Rat;Mouse;
Applications	WB;IHC;IF;ELISA
Gene Name	SDC1
Protein Name	Syndecan-1
Immunogen	The antiserum was produced against synthesized peptide derived from the Internal region of human SDC1. AA range:191-240
Specificity	CD138 Polyclonal Antibody detects endogenous levels of CD138 protein.
Formulation	Liquid in PBS containing 50% glycerol, 0.5% BSA and 0.02% sodium azide.
Source	Polyclonal, Rabbit,IgG
Purification	The antibody was affinity-purified from rabbit antiserum by affinity-chromatography using epitope-specific immunogen.
Dilution	WB: 1/500 - 1/2000. IHC-p: 1:100-1:300. ELISA: 1/10000.. IF 1:50-200
Concentration	1 mg/ml
Purity	≥90%
Storage Stability	-20°C/1 year
Synonyms	SDC1; SDC; Syndecan-1; SYND1; CD138
Observed Band	34kD
Cell Pathway	Membrane ; Single-pass type I membrane protein . Secreted . Secreted, extracellular exosome . Shedding of the ectodomain produces a soluble form. .
Tissue Specificity	Dermoid cancer,Fibroblast,Kidney,Mammary gland,Placenta,
Function	function:Cell surface proteoglycan that bears both heparan sulfate and chondroitin sulfate and that links the cytoskeleton to the interstitial matrix.,similarity:Belongs to the syndecan proteoglycan family.,subunit:Interacts with CDCP1.,
Background	The protein encoded by this gene is a transmembrane (type I) heparan sulfate proteoglycan and is a member of the syndecan proteoglycan family. The syndecans mediate cell binding, cell signaling, and cytoskeletal organization and syndecan receptors are required for internalization of the HIV-1 tat protein. The syndecan-1 protein functions as an integral membrane protein and participates in cell proliferation, cell migration and cell-matrix interactions via its receptor for extracellular matrix proteins. Altered syndecan-1 expression has been detected in several different tumor types. While several transcript variants may exist for this gene, the full-length nature of only two have been described to date. These two represent the major variants of this gene and encode the same protein. [provided



by RefSeq, Jul 2008],

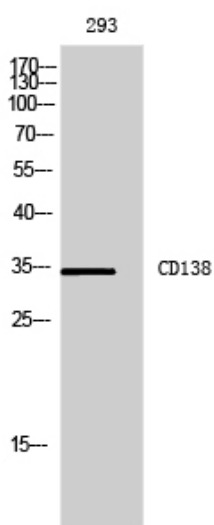
matters needing attention

Avoid repeated freezing and thawing!

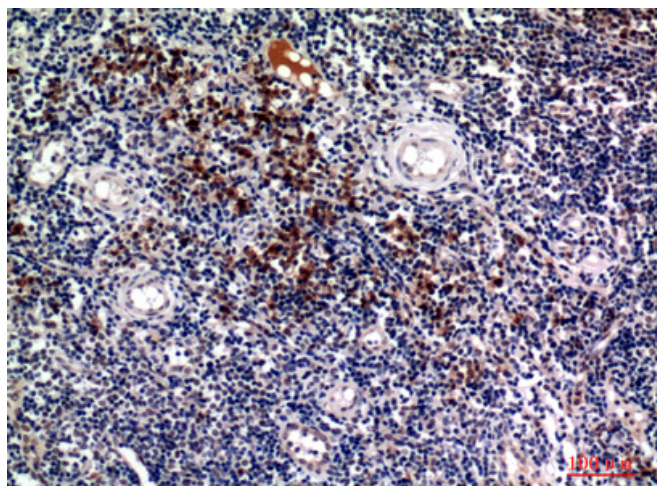
Usage suggestions

This product can be used in immunological reaction related experiments. For more information, please consult technical personnel.

Products Images



Western Blot analysis of 293 cells using CD138 Polyclonal Antibody. Secondary antibody(catalog#:RS0002) was diluted at 1:20000



Immunohistochemical analysis of paraffin-embedded human-tonsils, antibody was diluted at 1:100